

ARMOUR SYSTEMS™



planorama® archival + display system

Planorama® archival + display system

Made from inert anodised aluminium, Planorama® is a bespoke, archival drawer cabinet system. It can be built to almost any size and configuration with drawers that can range in depth from 10mm to as deep as required.

- lightweight giving low floor loading
- space efficient with only 2mm required between drawers
- drawers larger than AO can be supplied
- dust brushes fitted to every drawer
- standard finish in natural silver but can be anodised or powder coated to your specification
- systems can be fitted with a glazed top for display purposes
- drawers can be fitted with secure lockable glass tops

[1] *Fitzwilliam Museum, Cambridge*

[2] *G.L. Watson, Liverpool*

[3] *Soldiers of Gloucester*

[4] *The British Museum*
© Trustees of the British Museum

[5] *The British Museum*
© Trustees of the British Museum

[6] *Musashino University, Japan*

[7] *Fitzwilliam Museum, Cambridge*

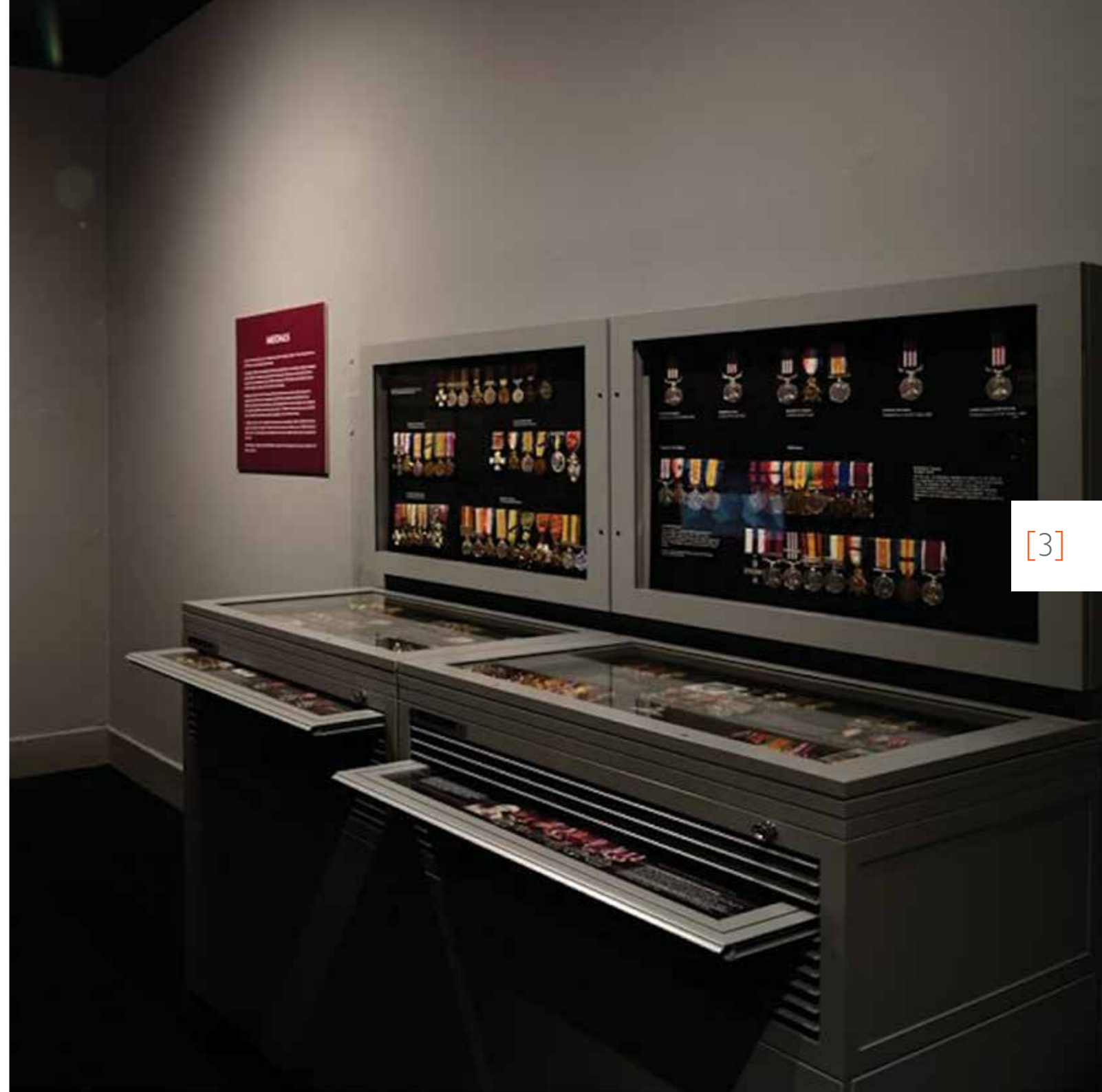
[8] *Fitzwilliam Museum, Cambridge*



[2]



[3]



[4]



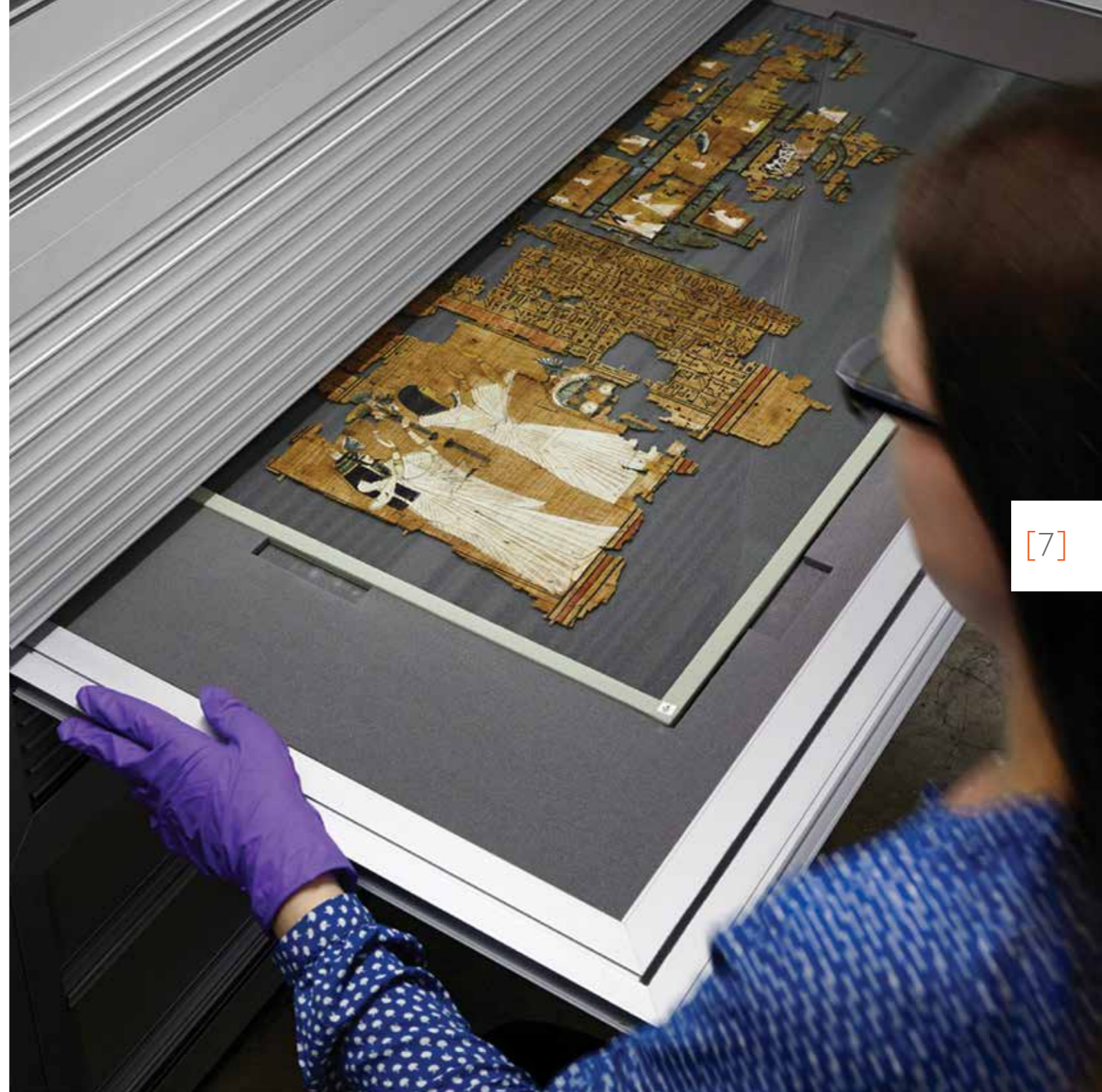
[5]



[6]



[7]



[8]



Armour Systems Limited

Unit J Lyon Road,
Denbigh West,
Milton Keynes, MK1 1EX
United Kingdom

DL +44 (0) 1908 377333
E sales@armour-systems.com
www.armour-systems.com

Registered Office:

Unit J Lyon Road, Denbigh West,
Milton Keynes MK1 1EX

**Armour Systems Limited company
registration number:**
08475897

Armour Systems Limited VAT:
GB365 706087

North American office: **Armour Systems**

Janesville Innovation Centre
2949 Venture Drive, Suite 106,
Janesville, WI 53546
United States

DL | (608) 554-1063
E ben@armour-systems.com
www.armour-systems.com